



# CPI-17 Polyclonal Antibody

<b>Catalog No</b>	YP-Ab-03786
<b>Isotype</b>	IgG
<b>Reactivity</b>	Human;Mouse;Rat
<b>Applications</b>	WB;IHC;IF;ELISA
<b>Gene Name</b>	PPP1R14A
<b>Protein Name</b>	Protein phosphatase 1 regulatory subunit 14A
<b>Immunogen</b>	The antiserum was produced against synthesized peptide derived from human CPI17 alpha. AA range:5-54
<b>Specificity</b>	CPI-17 Polyclonal Antibody detects endogenous levels of CPI-17 protein.
<b>Formulation</b>	Liquid in PBS containing 50% glycerol, 0.5% BSA and 0.02% sodium azide.
<b>Source</b>	Polyclonal, Rabbit,IgG
<b>Purification</b>	The antibody was affinity-purified from rabbit antiserum by affinity-chromatography using epitope-specific immunogen.
<b>Dilution</b>	Western Blot: 1/500 - 1/2000. Immunohistochemistry: 1/100 - 1/300. Immunofluorescence: 1/200 - 1/1000. ELISA: 1/20000. Not yet tested in other applications.
<b>Concentration</b>	1 mg/ml
<b>Purity</b>	≥90%
<b>Storage Stability</b>	-20°C/1 year
<b>Synonyms</b>	PPP1R14A; CPI17; PPP1INL; Protein phosphatase 1 regulatory subunit 14A; 17 kDa PKC-potentiated inhibitory protein of PP1; Protein kinase C-potentiated inhibitor protein of 17 kDa; CPI-17
<b>Observed Band</b>	22kD
<b>Cell Pathway</b>	Cytoplasm .
<b>Tissue Specificity</b>	Isoform 1 is detected in aorta and testis. Isoform 2 is detected in aorta.
<b>Function</b>	function:Inhibitor of PPP1CA. Has over 1000-fold higher inhibitory activity when phosphorylated, creating a molecular switch for regulating the phosphorylation status of PPP1CA substrates and smooth muscle contraction. ,similarity:Belongs to the PP1 inhibitor family. ,tissue specificity:Isoform 1 is detected in aorta and testis. Isoform 2 is detected in aorta. ,
<b>Background</b>	The protein encoded by this gene belongs to the protein phosphatase 1 (PP1) inhibitor family. This protein is an inhibitor of smooth muscle myosin phosphatase, and has higher inhibitory activity when phosphorylated. Inhibition of myosin phosphatase leads to increased myosin phosphorylation and enhanced smooth muscle contraction. Alternatively spliced transcript variants encoding different isoforms have been noted for this gene. [provided by RefSeq, Sep 2011],



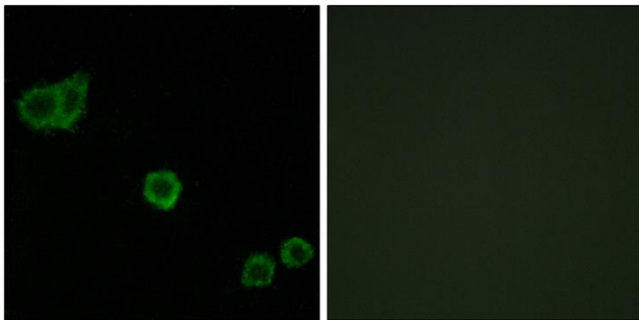
**matters needing attention**

Avoid repeated freezing and thawing!

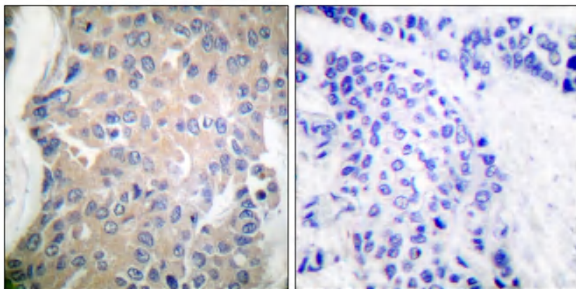
**Usage suggestions**

This product can be used in immunological reaction related experiments. For more information, please consult technical personnel.

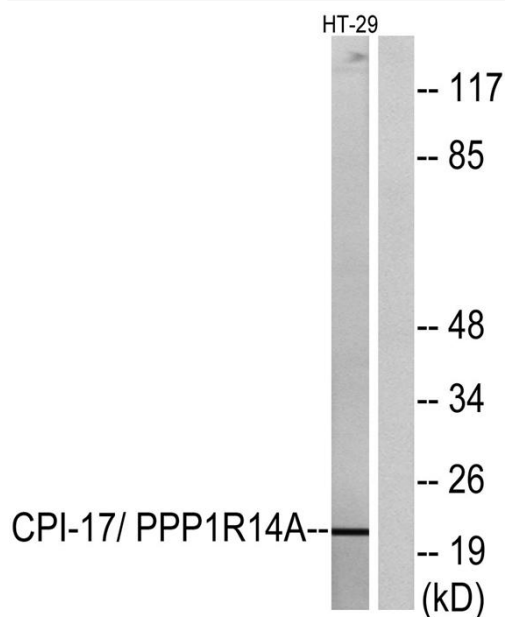
## Products Images



Immunofluorescence analysis of HeLa cells, using CPI17 alpha Antibody. The picture on the right is blocked with the synthesized peptide.



Immunohistochemistry analysis of paraffin-embedded human breast carcinoma tissue, using CPI17 alpha Antibody. The picture on the right is blocked with the synthesized peptide.



Western blot analysis of lysates from HT-29 cells, using CPI17 alpha Antibody. The lane on the right is blocked with the synthesized peptide.